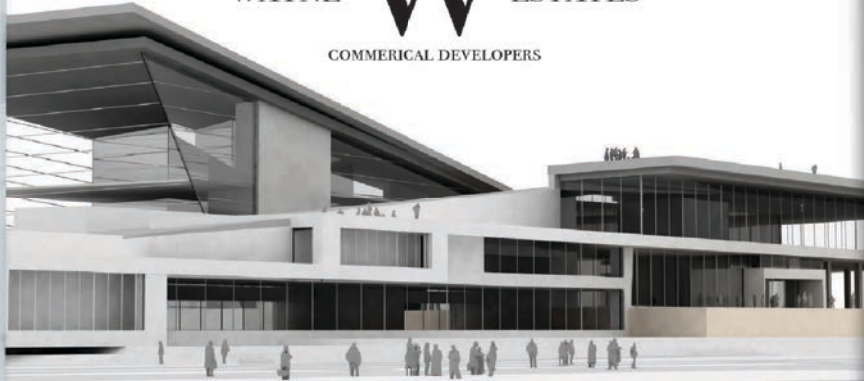
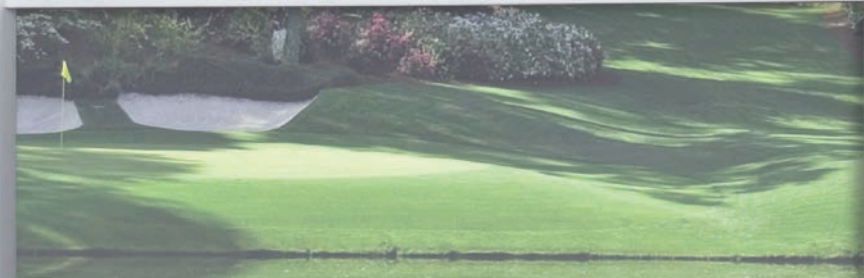


WAYNE  ESTATES
COMMERCIAL DEVELOPERS



Coming Spring 2016



**The Vinyl
Carolina Sign Frame
Sign System**

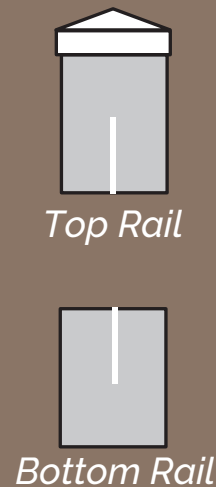
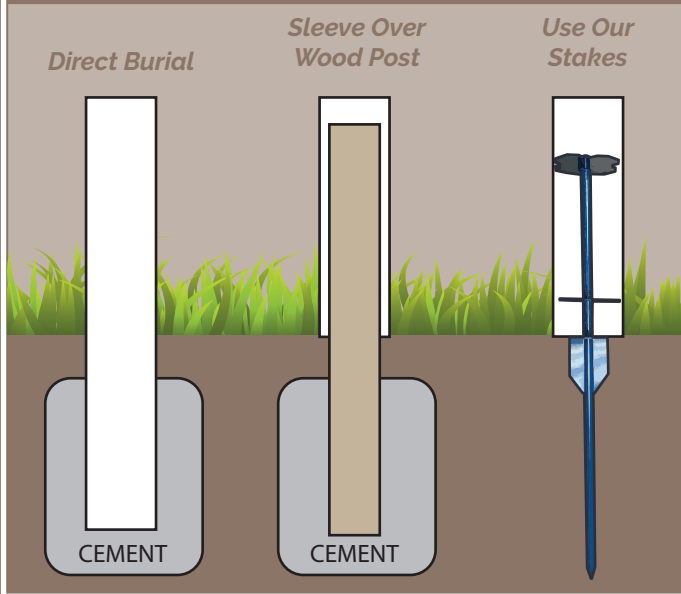
The Vinyl Carolina Sign Frame Sign System

Our Carolina Sign Frame is engineered to withstand today's demands for affordable quality in the sign industry. With the use of commercial grade vinyl extrusions and stainless steel hardware, this frame will accept and support almost any substrate in the industry. Our design allows for fast and simple assembly.

- (2) 4" x 4" x 8' Structural Grade Vinyl Posts
- (2) Standard Flat Caps
- Cross rails reinforced with vinyl
- All necessary hardware
- Substrate not included

Please contact a representative for assistance or if you need more precise sizing options.

installation tips



The posts and rails will be routed to the appropriate thickness of your substrate. The substrate will install into the frame and will take visual space. We recommend that you leave a 2" border to properly accommodate for your design space on the sign panel.

available caps + colors



flat



gothic



ball



princeton



new england



federation



white



khaki